



MAYB

2014 Tournaments

4th Grade through High School

July 18th - 20th, 2014

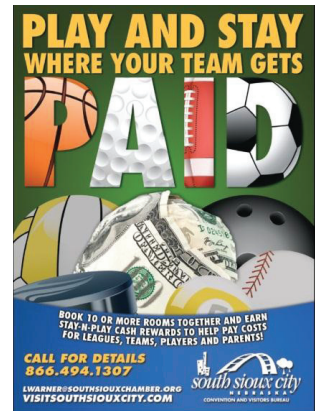
Youth Organizations

(High School and under)

Play & Stay Cash Rewards Earn Cash for your Group South Sioux City, NE

A Cash Reward will go to your Team/Organization. Money will be sent after copies of the paid receipts are submitted to the South Sioux City Convention & Visitors Bureau for reimbursement. A check will be sent to one person representing the team or organization. Reimbursement must be submitted to the SSC Convention & Visitors Bureau within 90 days of your stay in our community.

Room Nights	Cash Rewards
10	\$100
15	\$150
20	\$200
30	\$250
40	\$300



Reserve Rooms early to receive better discount.

*America's Best Value Inn

402-494-4114
4402 Dakota Ave.
South Sioux City, NE

Knights Inn
402-494-8874
2829 Dakota Ave.
South Sioux City, NE

Marina Inn Hotel & Conference Center

402-494-4000
385 E. 4th St.
South Sioux City, NE

Midtown Motel
402-494-9783
103 E. 18th St.
South Sioux City, NE

Budget Host Inn
402-494-2021
1201 First Ave.
South Sioux City, NE

Regency Inn
402-494-3046
400 Dakota Ave.
South Sioux City, NE

*South Sioux City Chamber members
♦ Indoor swimming pool

For more information or questions please contact
South Sioux City Convention & Visitors Bureau
3900 Dakota Ave., Suite 11, South Sioux City, NE 68776 • 866-494-1307

You are invited to South Sioux City Nebraska for the Youth Shootout Tournament July 18th -20th, 2014. Quality officials, great facilities and excellent competition are just a few of the reasons to participate in this tournament. South Sioux City is part of the Greater Siouxland Area and while we encourage you to stay in our wonderful community you are five minutes away from the interstate which can take you anywhere in the Metropolitan area. Last year this tournament had 74 teams, so register early as we are sure to fill up. Also the sooner you reserve your hotel rooms, the better the discount. We do have rooms blocked at our Chamber member motels and you can earn a kick-back off your rooms from the South Sioux City Convention & Visitors Bureau.

Game Times

The first games will begin on Friday evening at 5:30 pm (if your team does not want to play please say that on the form) – they will go until 10:00 pm – Start Saturday at 8:00 am and the last Championship game will start at 5:00 pm on Sunday. Teams may request not to have early game on Saturday if they are traveling from long distance.

Admission

- Adults Daily pass \$6.00/Weekend \$10
- Students K-12 Daily pass \$5 / Weekend \$8
- Senior Citizens Daily pass \$3 / Weekend \$5

All teams will get a total of TWO (2) passes, which can be used for coaches, managers, scorekeepers, etc. Admission fees will be charged for any additional team personnel.

Concessions

Concessions will be available on site with food, drinks, and T-shirts. No outside food or drinks will be allowed inside any of the facilities (except for water).

Tournament Rules – 5 GAME GUARANTEE!

Complete rules will be provided on all scorer's tables and at admission table. Basic rules to keep in mind – Games will be two (2) 20 minute halves. It is a running clock, except for the last two minutes of the 2nd half. Clock will not stop if there is a 15 point or greater lead at the 2 minute mark in the 2nd half. Coaches get four (4) timeouts per game (all 30 seconds), which can be used at any time. Overtime will be 2 minutes. A champion for round robin divisions, if tiebreakers cannot be decided from head-to-head competition, will be decided by total points allowed among teams engaged in the tie-break process only.

GYM DIRECTIONS

South Sioux City High School = Mini-Dome (Mini-1 Mini 2) - Practice Gym (Prac-1 Prac-2 Prac-3)
3301 G Street, South Sioux City, NE 68776

Directions: From I-29 South (Coming from Sioux Falls)- Take exit 149, Hamilton Blvd, Go past first set of stop lights and up to the bridge entrance. Turn right to cross Missouri River. Follow Dakota Avenue to 33rd Street and take a left. Follow to G Street and turn right. Take first right into the parking lot; it will be the building to the left.

From I-29 North (Coming from Omaha)- Take Exit 144B (Be Aware of Road Construction, exit will be marked), for I-129, Follow over Missouri River and take exit 2 (first exit). Turn right on Dakota Avenue and take the first right at the lights for 39th Street. Follow down to G Street and turn left. Go two blocks and take second entrance into parking lot; it will be the building to the left.

South Sioux City Middle School = MS-1 MS-2
3625 G Street, South Sioux City, NE 68776

Directions: Building attached to the SSC High School

Directions: From I-29 South (Coming from Sioux Falls)- Take exit 149, Hamilton Blvd, Go past first set of stop lights and up to the bridge entrance (Follow marked path through the road construction). Turn right to cross Missouri River. Follow Dakota Avenue to 33rd Street and take a left. Follow to G Street and turn right. Take second right into the parking lot; it will be the building to the right.

The Y- Norm Waitt Sr. YMCA = YMCA 1 – YMCA 2
601 Riverview Drive, South Sioux City, NE 68776

Directions: From I-29 South (Coming from Sioux Falls)- Take Exit 149, Hamilton Blvd, Go past first set of stop lights and up to the bridge entrance. Turn right to cross Missouri River. Take a right at the first set of stop lights, Riverview Drive (McDonald's is on the corner). Follow through first stop sign to E Street. Take a left and then the first right will be the parking lot for the YMCA.

From I-29 North (Coming from Omaha)- From I-29 North (Coming from Omaha)- Take Exit 144B, for I-129, Follow over Missouri River and take exit 2 (first exit). Take a right on Dakota Ave and follow to Riverview Drive, take a right at the McDonald's. Follow through the first stop sign to E Street. Take a left and then the first right will be the parking lot for the YMCA.